



# Northern Neonatal Network

## Quarterly Report

### Q3 Oct-Dec 23



This report is a summary of the dashboard data submitted every month by each of the 8 Trusts that make up the Northern Neonatal Network. These figures are taken from both the BadgerNet Database where the required data is available and the Dashboard returns that have been supplied to the network each month.

It is important to note the following when looking at these reports;

- All reports use the BAPM 2011 definitions. This includes a “Normal Care” category. If ONLY “Carer resident – caring for baby” or the “None or >4hourly intervals” for observations/monitoring on the “general summary” page is ticked, this will classify as a “normal care” day. Under current commissioning guidance, unlike “special care” days, these are not funded. We have included these days as they are what the system reflects for each Unit. You may wish to check these for accuracy of reporting purposes.
- Transitional Care (TC) activity is usually supplied manually via the Monthly data Dashboards and reported where available. Some Units are moving to admit TC babies onto Badgernet but currently other “TC days” on the system typically refer to pre-discharge “rooming in” activity or “place of care” being wrongly ticked. However, all are included as available
- The staffing level reports are calculated by mapping nurse staffing levels submitted by Unit managers via Badgernet against the activity (baby numbers and their level of care) generated by the BAPM 2011 definitions.
  - The definitions for each of the included items are those given on the dashboard.
- The reports relating to transfers in Section 3 are supplied by NNeTS (Northern Neonatal Transport Service).
- Many of these metrics and reports are replicated for the three Local Maternity Systems (LMS) in our region and distributed separately to the appropriate stakeholders in them where they are discussed in their relevant Board meetings
- We are working with the Maternity Network to try and get gestational birth data for more accurate reporting, however, this is a work in progress, hence the incomplete charts on page 2 but this remains our aim and will be in the format as laid out there once available.
- Rolling 1-year IC and VLBW (<1500g) admissions data is now included for the 3 NICUs to monitor the impact of the recently commissioned and now fully operational 4 new IC cots at the RVI.

We continue to invite constructive criticism and feedback from all our Stakeholders across the Network to further refine and improve them. It is our hope that these quarterly Reports will continue to provide a rich but useful source of data for both Network and individual Units/Trusts and help determine issues across the Network in all our Units in relation to their activity and capacity, thus informing future strategic discussions and planning of neonatal services.

As always, the aim of this is to provide the very best service available to the babies and families within our Network and thus meet our one core principle – “To give the highest possible standard of safe, effective care to babies and their families.”

Caroline Buckley, Network Manager/Mark Green, Network Data Manager January 2024

## Section 1 - Activity

Indicator	RVI	James Cook	Sunderland	North Tees	Cramlington	Carlisle	Darlington	UHND	Gateshead	West Cumberland
<b>Births</b>										
Live Births	1362	1172	991	713	895	379	474	604	489	253
<b>Age</b>										
<23	*	*			*	*	*	*	*	*
23-27	8	7			*	*	*	*	*	*
28-31	21	16			*	*	*	*	*	*
32-36	108	64			40	35	31	39	34	14
=>37	1225	1085			850	343	443	562	454	238
<b>Weight</b>										
<750	*	5			*	*	*	*	*	*
750-999	*	5			*	*	*	*	*	*
1000-1499	11	12			*	*	*	*	*	*
1500-1999	15	21			*	7	9	8	*	*
2000-2499	100	44			38	24	21	32	30	13
>=2500	1221	1085			846	379	443	562	452	236
<b>Admissions</b>										
Total Admissions	205	118	107	77	77	47	29	52	62	30
1st Admissions	174	104	83	64	55	41	22	43	40	23
Term admissions	92	47	41	33	31	21	10	27	25	12
VLBW admissions	32	28	19	10	5	*	*	*	*	*
<b>1 Year rolling VLBW</b>	<b>117</b>	<b>101</b>	<b>68</b>							
% term admissions (births)	6.8%	4.0%	4.1%	4.6%	3.5%	5.5%	2.1%	4.5%	5.1%	4.2%
% term admissions (admissions)	52.9%	45.2%	49.4%	51.6%	56.4%	51.2%	45.5%	62.8%	62.5%	52.2%
TC admissions	213	N/A*	73	N/A*	57	19	121	166	33	22
<b>IC days</b>										
IC days	729	387	182	6	8	7	0	6	3	4
<b>1 year rolling IC</b>	<b>2605</b>	<b>1265</b>	<b>872</b>							
HD days	889	630	337	85	42	45	31	58	53	15
SC days	983	969	795	659	508	271	287	455	518	261
NC days	41	2	1	7	78	34	18	14	51	9
TC days	269	N/A*	175	N/A*	141	40	241	348	133	N/A*

N/A\* - data not available

### Inpatient after 44 weeks corrected gestation Q3

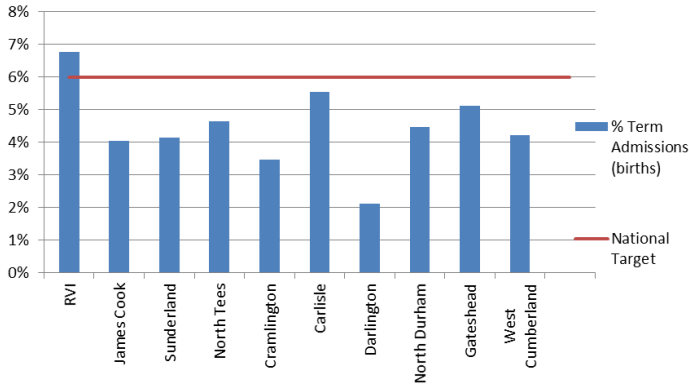
Unit	Admissions	I/P after 44wks	% still inpatient
RVI	205	0	0.0%
James Cook	118	1	0.8%
Sunderland	107	0	0.0%
North Tees	77	0	0.0%
Cramlington	77	4	5.2%
Carlisle	47	2	4.3%
Darlington	29	0	0.0%
North Durham	52	0	0.0%
Gateshead	62	1	1.6%
West Cumberland	30	0	0.0%

### <30 week exceptions Q2

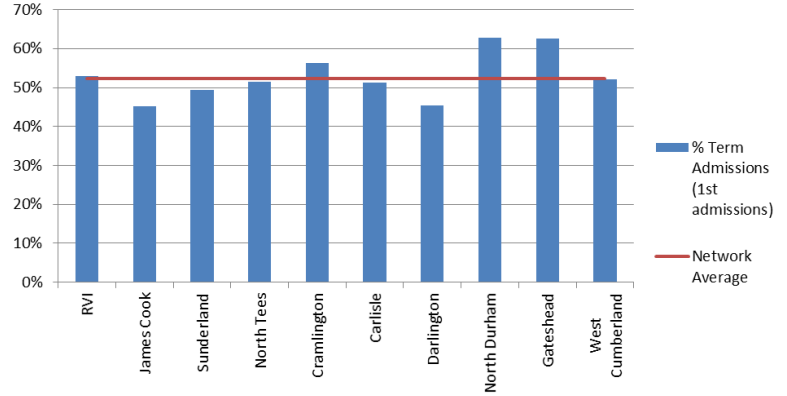
Unit	Booked	Delivered	Exception
North Tees	5	3	60%
Cramlington	7	1	14%
Carlisle	2	1	50%
Darlington	3	0	0%
North Durham	7	1	14%
Gateshead	0	0	N/A
West Cumberland	3	1	33%

Booked 27  
 Delivered 7  
 Pathway Exception 26%

**Term admissions rate as % of total births Oct-Dec 2023**



**Term admission as % of all admissions Oct-Dec 2023**

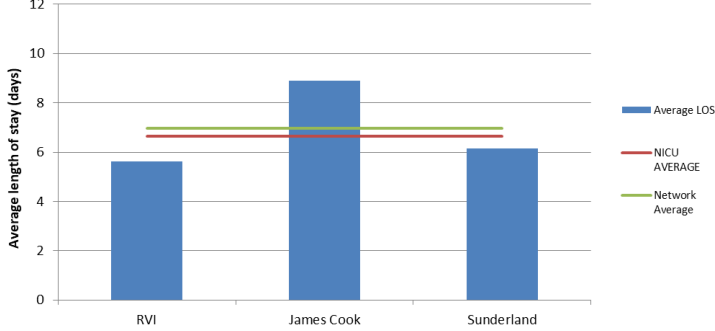


<sup>1</sup> Calculated using 1<sup>st</sup> episodes admissions and total births.

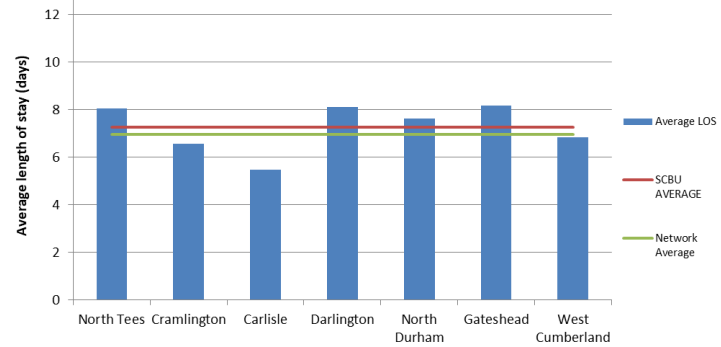
<sup>2</sup> Calculated using 1<sup>st</sup> episodes term admission as a percentage of 1<sup>st</sup> admissions.

## Section 2 – Length of Stay<sup>3</sup>

**Average length of stay NICU's (32+ gest) Oct-Dec 2023**



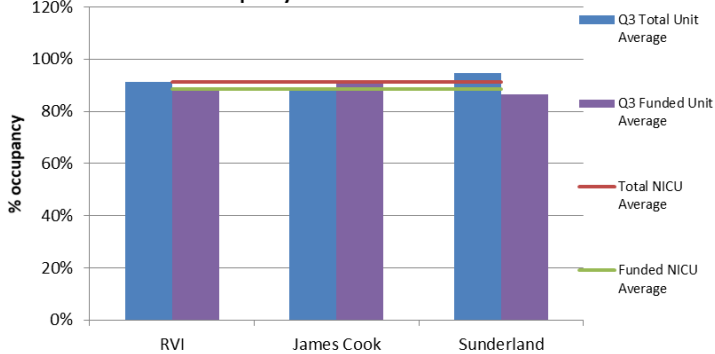
**Average length of stay SCBU's (32+ wks gest) Oct-Dec 2023**



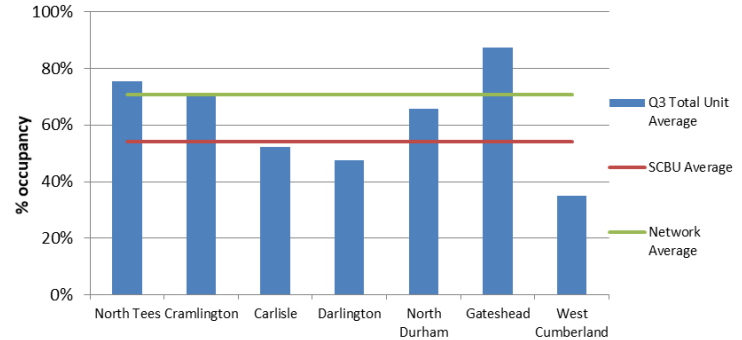
<sup>3</sup> Calculated using total discharges >4hrs, not died, and total length of stay.

## Section 3 – Occupancy<sup>4</sup>

**% occupancy NICU Oct-Dec 2023**



**% occupancy SCBU Oct-Dec 2023**



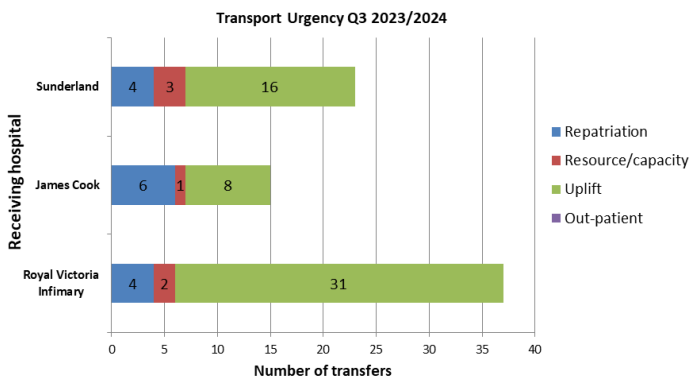
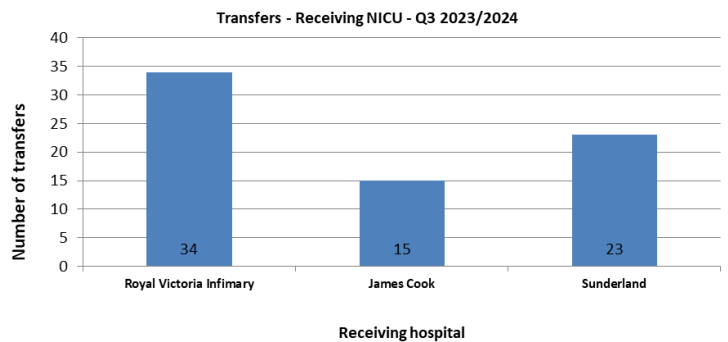
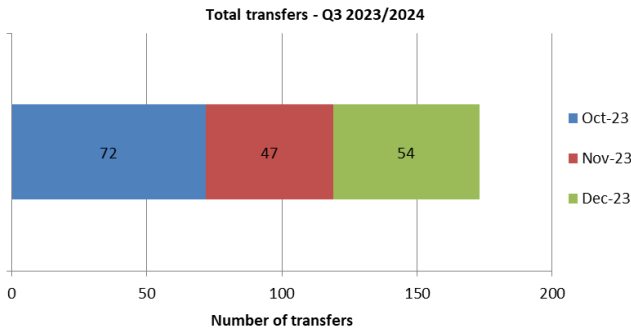
<sup>4</sup> Calculated using available total cot numbers and occupancy levels.

## Section 4a – NNAP Indicators<sup>5</sup>

		NNAP							
Period:		Q3 23-24							
Unit	Antenatal Steroids given to standard (22-33wks)	Mag Sulph (<30)	Deferred Cord Clamping (<34)	Temperature Taken within 1hr and in range (<34)	First Consultation within 24hrs	Parental Presence at Ward Round	ROP screening (<31wks or <1501g)	Breastmilk Feeding on day 14 of life (<34)	Breast Milk at Discharge Home (<34)
RVI	49%	85%	70%	71%	92%	86%	33%	71%	50%
James Cook	52%	88%	64%	91%	74%	84%	86%	87%	61%
Sunderland	23%	100%	77%	81%	96%	89%	79%	74%	57%
North Tees	28%	67%	61%	76%	89%	92%	100%	60%	47%
Cramlington	29%	0%	57%	86%	96%	89%	33%	57%	50%
Carlisle	25%	50%	0%	100%	84%	71%	0%	0%	50%
Darlington	33%	N/A	0%	67%	96%	90%	75%	100%	50%
North Durham	38%	100%	75%	67%	93%	85%	100%	63%	50%
Gateshead	17%	N/A	67%	60%	76%	76%	20%	55%	47%
West Cumberland	50%	100%	50%	100%	88%	100%	75%	25%	50%
<b>Northern</b>	<b>34%</b>	<b>74%</b>	<b>52%</b>	<b>80%</b>	<b>88%</b>	<b>86%</b>	<b>60%</b>	<b>59%</b>	<b>51%</b>

<sup>5</sup> These are taken from the BadgerNet Dashboard reports for national NNAP Metrics. These are colour coded to reflect whether each unit is achieving the NNAP standard for each indicator. Non colour-coded indicators are for benchmarking purposes only.

## Section 6 – Northern Neonatal Transport Service (NNETS)<sup>6</sup>



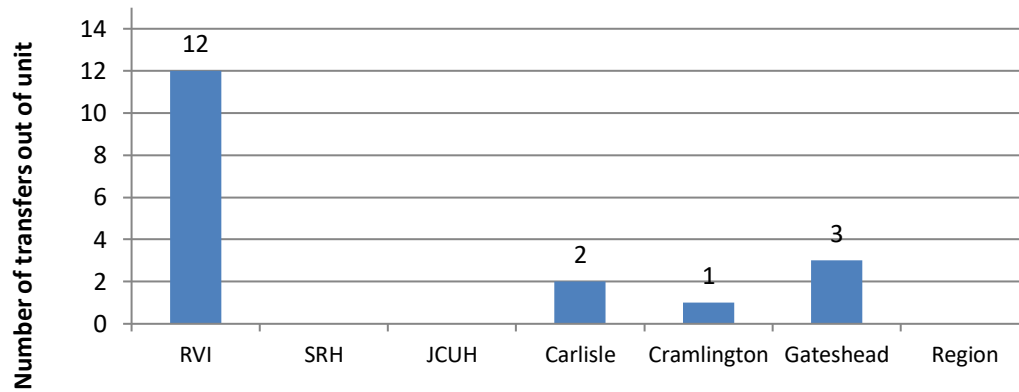
<sup>6</sup> From NNETs monthly data extract.

## Non-clinical transfers due to cot availability Q3 2023/24

These transfers refer to those cases where babies need to be moved following birth from their hospital of booking and delivery for non-clinical reasons – lack of capacity and cots. We are monitoring these as part of our reconfiguration data work on patient flows.

NICU	Transfers out
Royal Victoria Infirmary	12
Cramlington	1
Carlisle	2
Gateshead	3
Region	0

Non-clinical transfers out due to cot capacity Q3 2023/2024



## Out of network activity/transfers

None